

zoom

rapid setup for a crew or a crowd

ALL PLASTIC - AP

GSA SIN # 711-18

- Multi-purpose seating including nesting, task and task stool models
- Perfect for collaborative, meeting and training spaces
- Choice of two mesh, frame and plastic colors
- Plastic or upholstered seat
- CAL TB 133 Fire Code approved
- Warranted to 300 lbs.



CREATING ZOOM MODEL NUMBER

MODEL NUMBER CONTROL FRAME COLOR PLASTIC COLOR MESH COLOR BASE CASTERS PACKAGING

1 1 2 - - - F - P - - - B A - - - C - - -

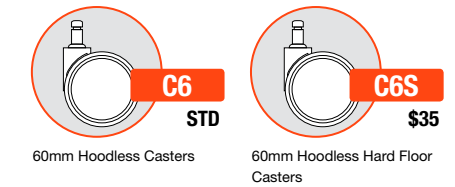
* FOR ARMLESS CODE USE A00 * ONLY SELECT CASTER CODE FOR MODEL 1215,1265

PACKAGING NOTES

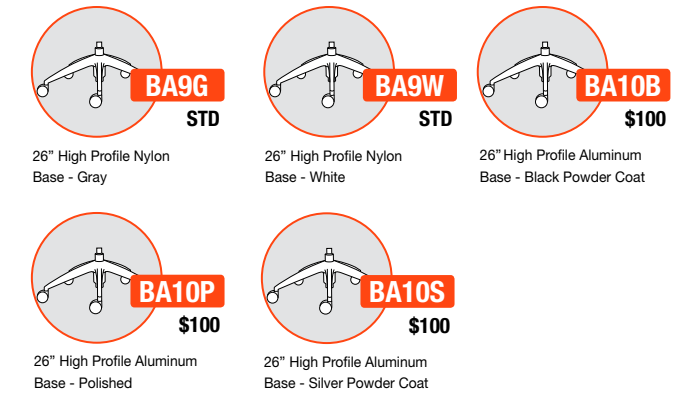
CODE	DESCRIPTION	LIST UPCHARGE
AB	ASSEMBLED IN BAG	\$0
AC	ASSEMBLED IN CARTON	\$0

MODEL	CONTROL	DESCRIPTION	FRAME COLOR	FEATURES	DIMENSIONS
1125	B2	TASK SEATING BASIC TASK Mesh back with plastic seat	SF 510 WF 510	<ul style="list-style-type: none"> • Pneumatic seat height adjustment 	WIDTH: 26.5 DEPTH: 26.5 HEIGHT: 35.0 SEAT WIDTH: 17.5 SEAT DEPTH: 16.5 SEAT HEIGHT: 17.0-22.0 BACK WIDTH: 18.0 BACK HEIGHT: 19.0 COM: N/A WEIGHT: 24.0 LB
1126	B2	10" STOOL BASIC TASK Mesh back with plastic seat	SF 635 WF 635	<ul style="list-style-type: none"> • Pneumatic seat height adjustment • Height adj. 20" diameter footring 	WIDTH: 26.5 DEPTH: 26.5 HEIGHT: 35.0 SEAT WIDTH: 17.5 SEAT DEPTH: 16.5 SEAT HEIGHT: 26.0-36.0 BACK WIDTH: 18.0 BACK HEIGHT: 19.0 COM: N/A WEIGHT: 31.0 LB
1128	B2	8" STOOL BASIC TASK Mesh back with plastic seat	SF 635 WF 635	<ul style="list-style-type: none"> • Pneumatic seat height adjustment • Height adj. 20" diameter footring 	WIDTH: 26.5 DEPTH: 26.5 HEIGHT: 35.0 SEAT WIDTH: 17.5 SEAT DEPTH: 16.5 SEAT HEIGHT: 21.5-29.5 BACK WIDTH: 18.0 BACK HEIGHT: 19.0 COM: N/A WEIGHT: 30.0 LB

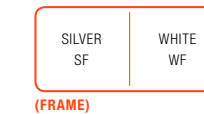
CASTER OPTIONS



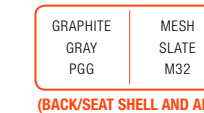
BASE OPTIONS



FRAME COLORS



PLASTIC AND MESH COLORS



zoom

rapid setup for a crew or a crowd

MESH BACK

GSA SIN # 711-18

- Multi-purpose seating including nesting, task and task stool models
- Perfect for collaborative, meeting and training spaces
- Choice of two mesh, frame and plastic colors
- Plastic or upholstered seat
- CAL TB 133 Fire Code approved
- Warranted to 300 lbs.



CREATING ZOOM MODEL NUMBER

MODEL NUMBER CONTROL FRAME COLOR PLASTIC COLOR MESH COLOR UPHOLSTERY GRADE CASTERS PACKAGING

1 1 1 5 - G T - F - P - - - - C - - -

* FOR ARMLESS CODE USE A00 * ONLY SELECT CASTER CODE FOR MODEL 1215,1265

PACKAGING NOTES

CODE	DESCRIPTION	LIST UPCHARGE
AB	ASSEMBLED IN BAG	\$0
AC	ASSEMBLED IN CARTON	\$0

ZOOM NESTING CHAIRS SHIP UP TO 2 PER CARTON

MODEL	CONTROL	DESCRIPTION	FRAME COLOR
1115	GT	GUEST NESTING Mesh back with plastic seat	P
			SF 410
			WF 410

MODEL	CONTROL	DESCRIPTION	FRAME COLOR
1115	GT	GUEST NESTING Mesh back with upholstered seat	A/COM
			SF 475 510 530 565 600 640 685
			WF 475 510 530 565 600 640 685

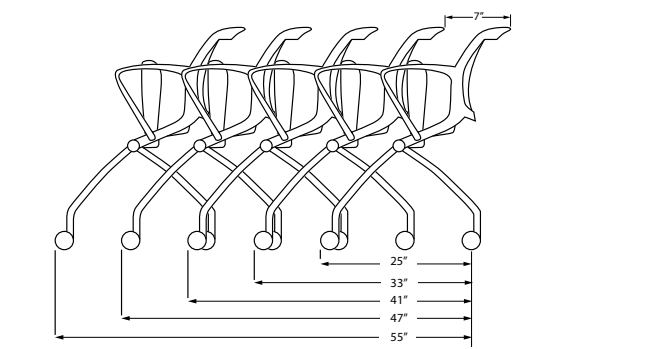
FEATURES	DIMENSIONS
<ul style="list-style-type: none"> • Flex back movement with back lock feature • Upright lock position with subtle flex back movement 	WIDTH: 24.0 DEPTH: 21.0 HEIGHT: 35.0 SEAT WIDTH: 17.5 SEAT DEPTH: 15.5 SEAT HEIGHT: 17.0 BACK WIDTH: 18.0 BACK HEIGHT: 19.0 COM: N/A WEIGHT: 24.0 LB

FEATURES	DIMENSIONS
<ul style="list-style-type: none"> • Flex back movement with back lock feature • Upright lock position with subtle flex back movement • Molded foam seat 	WIDTH: 24.0 DEPTH: 21.0 HEIGHT: 35.0 SEAT WIDTH: 17.5 SEAT DEPTH: 15.5 SEAT HEIGHT: 18.0 BACK WIDTH: 18.0 BACK HEIGHT: 19.0 COM: 1.0 YD WEIGHT: 25.0 LB

CASTER OPTIONS

C12S
STD
50mm Hoodless Casters

C5S
\$30
50mm Hooded Hard Floor Casters



FRAME COLORS

SILVER SF	WHITE WF
--------------	-------------

(FRAME)

PLASTIC AND MESH COLORS

GRAPHITE GRAY PGG	MESH SLATE M32	WHITE PWH	MESH SNOW M33
-------------------------	----------------------	--------------	---------------------

(BACK/SEAT SHELL AND ARMS)

CAUTION: Careless stacking of chairs may scratch and damage frames.

zoom

rapid setup for a crew or a crowd

UPHOLSTERED SEAT - US

GSA SIN # 711-18

- Multi-purpose seating including nesting, task and task stool models
- Perfect for collaborative, meeting and training spaces
- Choice of two mesh, frame and plastic colors
- Plastic or upholstered seat
- CAL TB 133 Fire Code approved
- Warranted to 300 lbs.



CREATING ZOOM MODEL NUMBER

MODEL NUMBER CONTROL FRAME COLOR PLASTIC COLOR MESH COLOR BASE CASTERS PACKAGING

1 1 2 - - - F - P - - - B A - - - C - - -

PACKAGING NOTES

CODE	DESCRIPTION	LIST UPCHARGE
AB	ASSEMBLED IN BAG	\$0
AC	ASSEMBLED IN CARTON	\$0

MODEL	CONTROL	DESCRIPTION	FRAME COLOR		FEATURES	DIMENSIONS	CASTER OPTIONS	BASE OPTIONS																					
1125	B2	TASK SEATING BASIC TASK Mesh back with upholstered seat	SF WF	<table border="1"> <thead> <tr> <th>A/COM</th> <th>B</th> <th>C</th> <th>D</th> <th>E</th> <th>F</th> <th>G</th> </tr> </thead> <tbody> <tr> <td>575</td> <td>610</td> <td>630</td> <td>665</td> <td>700</td> <td>740</td> <td>785</td> </tr> <tr> <td>575</td> <td>610</td> <td>630</td> <td>665</td> <td>700</td> <td>740</td> <td>785</td> </tr> </tbody> </table>	A/COM	B	C	D	E	F	G	575	610	630	665	700	740	785	575	610	630	665	700	740	785	<ul style="list-style-type: none"> • Pneumatic seat height adjustment • Molded foam seat 	<p>WIDTH: 26.5 DEPTH: 26.5 HEIGHT: 35.0 SEAT WIDTH: 17.5 SEAT DEPTH: 16.5 SEAT HEIGHT: 18.0-23.0 BACK WIDTH: 18.0 BACK HEIGHT: 19.0 COM: 1.0 YD WEIGHT: 25.0 LB</p>	<p>C6 STD 60mm Hoodless Casters</p> <p>C6S \$35 60mm Hoodless Hard Floor Casters</p>	
A/COM	B	C	D	E	F	G																							
575	610	630	665	700	740	785																							
575	610	630	665	700	740	785																							
1126	B2	10" STOOL BASIC TASK Mesh back with upholstered seat	SF WF	<table border="1"> <thead> <tr> <th>A/COM</th> <th>B</th> <th>C</th> <th>D</th> <th>E</th> <th>F</th> <th>G</th> </tr> </thead> <tbody> <tr> <td>700</td> <td>735</td> <td>755</td> <td>790</td> <td>825</td> <td>865</td> <td>910</td> </tr> <tr> <td>700</td> <td>735</td> <td>755</td> <td>790</td> <td>825</td> <td>865</td> <td>910</td> </tr> </tbody> </table>	A/COM	B	C	D	E	F	G	700	735	755	790	825	865	910	700	735	755	790	825	865	910	<ul style="list-style-type: none"> • Pneumatic seat height adjustment • Height adj. 20" diameter footring • Molded foam seat 	<p>WIDTH: 26.5 DEPTH: 26.5 HEIGHT: 35.0 SEAT WIDTH: 17.5 SEAT DEPTH: 16.5 SEAT HEIGHT: 27.0-37.0 BACK WIDTH: 18.0 BACK HEIGHT: 19.0 COM: 1.0 YD WEIGHT: 32.0 LB</p>	<p>BA9G STD 26" High Profile Nylon Base - Gray</p> <p>BA9W STD 26" High Profile Nylon Base - White</p> <p>BA10B \$100 26" High Profile Aluminum Base - Black Powder Coat</p> <p>BA10P \$100 26" High Profile Aluminum Base - Polished</p> <p>BA10S \$100 26" High Profile Aluminum Base - Silver Powder Coat</p>	
A/COM	B	C	D	E	F	G																							
700	735	755	790	825	865	910																							
700	735	755	790	825	865	910																							
1128	B2	8" STOOL BASIC TASK Mesh back with upholstered seat	SF WF	<table border="1"> <thead> <tr> <th>A/COM</th> <th>B</th> <th>C</th> <th>D</th> <th>E</th> <th>F</th> <th>G</th> </tr> </thead> <tbody> <tr> <td>700</td> <td>735</td> <td>755</td> <td>790</td> <td>825</td> <td>865</td> <td>910</td> </tr> <tr> <td>700</td> <td>735</td> <td>755</td> <td>790</td> <td>825</td> <td>865</td> <td>910</td> </tr> </tbody> </table>	A/COM	B	C	D	E	F	G	700	735	755	790	825	865	910	700	735	755	790	825	865	910	<ul style="list-style-type: none"> • Pneumatic seat height adjustment • Height adj. 20" diameter footring • Molded foam seat 	<p>WIDTH: 26.5 DEPTH: 26.5 HEIGHT: 35.0 SEAT WIDTH: 17.5 SEAT DEPTH: 16.5 SEAT HEIGHT: 22.5-30.5 BACK WIDTH: 18.0 BACK HEIGHT: 19.0 COM: 1.0 YD WEIGHT: 31.0 LB</p>		
A/COM	B	C	D	E	F	G																							
700	735	755	790	825	865	910																							
700	735	755	790	825	865	910																							

FRAME COLORS

SILVER SF	WHITE WF
--------------	-------------

(FRAME)

PLASTIC AND MESH COLORS

GRAPHITE GRAY PGG	MESH SLATE M32	WHITE PWH	MESH SNOW M33
-------------------------	----------------------	--------------	---------------------

(BACK/SEAT SHELL AND ARMS)