

Express Card

48 Hour Quick Ship
Grades A, T, M0, M1

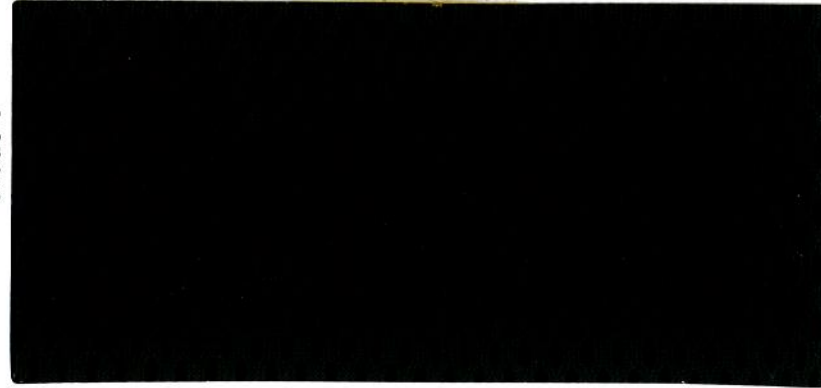


9to5[®]
s e a t i n g

.signature textiles

Air Grid Mesh

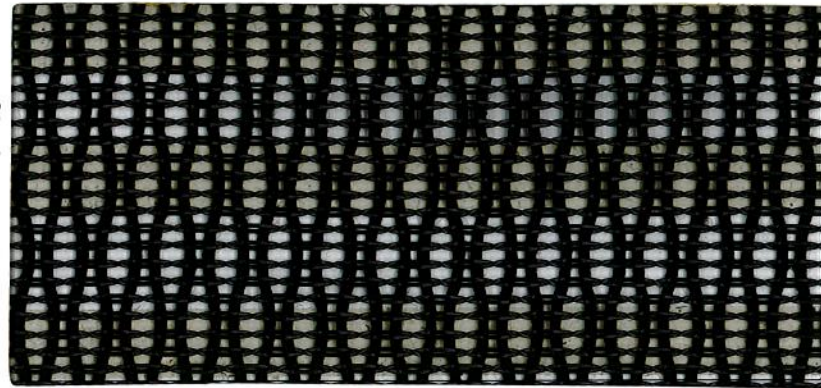
Grade T



Black T01

Mesh Pattern M0

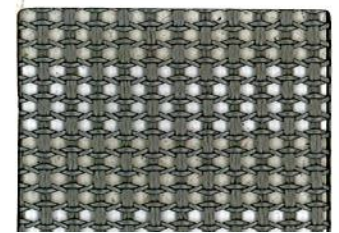
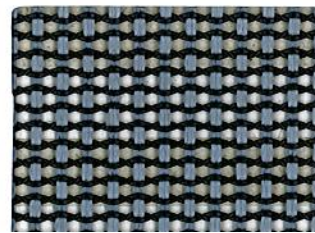
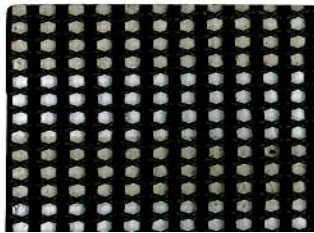
Grade M0



Black M01

Mesh Pattern M1

Grade M1



Crepe

Grade A



Black 101



Gray 102



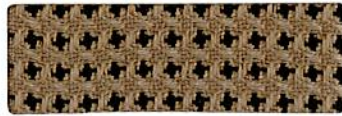
Dark Blue 104



Burgundy 106

Matrix

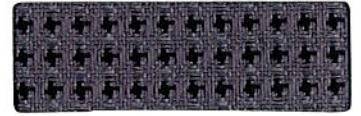
Grade A



Champagne 111



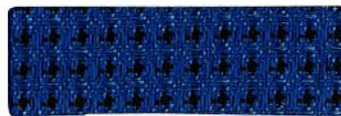
Fern 112



Lead 113



Plum 114



Peacock 115



Coal 116

Bingo

Grade A



Champagne 131



Green 132



Gray 133



Cherry 134



Navy 135



Black 136

Mosaic

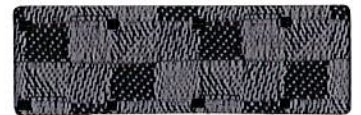
Grade A



Camel 141



Latte 142



Slate 143



Flame 144



Ocean 145



Nightfall 146

Tango

Grade A



Honey 151



Wasabi 152



Bark 153



Ruby 154








































Lake 155



Charcoal 156

TECHNICAL INFORMATION

54" Pattern	Fiber Content & Backing	Finish	Abrasion (D.R.)	Light-fastness	Cleaning Code	Grade
CREPE     	100% Polyester	Soil & Stain Resistant	250,000	40 Hrs. Class 4	W	A
MATRIX  	100% Polyester Acrylic Backing	Soil & Stain Resistant	50,000	40 Hrs. Class 4	W	A
BINGO     	100% Polyester Acrylic Backing	Soil & Stain Resistant	175,000	60 Hrs. Class 4	W	A
MOSAIC     	100% Polyester Acrylic Backing	Soil & Stain Resistant	175,000	60 Hrs. Class 4	W	A
TANGO     	100% Polyester Acrylic Backing	Soil & Stain Resistant	102,000	60 Hrs. Class 4	W	A
T01 AIR GRID MESH     	100% Polyester No Backing	Soil & Stain Resistant	250,000	40 Hrs. Class 5	W	A
M0 MESH     	60% Elastomeric 40% Polyester	Soil & Stain Resistant	100,000	160 Hrs. Class 4	SW	M0
M1 MESH     	68% Elastomeric 32% Polyester	Soil & Stain Resistant	100,000	160 Hrs. Class 4	SW	M1

EXPLANATION OF ACT ICONS FOR UPHOLSTERY

FIRE RETARDANCY

Flammability testing determined as fabric's resistance to burning



PASSES
California 117

COLORFASTNESS TO LIGHT

Colorfastness to light is the degree to which fabric will retain its color when exposed to light



PASSES

AATCC 16A-1974 or AATC 16E-1976; Class 4 minimum at 40 hours
NOTE: Class 4 minimum at 60 hours is recommended for direct sunlight exposure situations

PHYSICAL PROPERTIES

3 Physical property tests include: brush pill test to determine a fabric's pilling. Breaking/tensile strength is the ability of a fabric to withstand tension without breaking or tearing. Seam slippage is the pulling apart of fabrics at the seams



PASSES

Brush Pill ASTM D3511, 3-4 minimum
Breaking Strength ASTM D3597-D1682-64 (1975) 50 lbs. minimum in warp & weft
Seam Slippage ASTM D3597-D434-75 25 lbs. minimum in warp & weft.

ABRASION

Abrasion is the ability of a fabric to withstand damage from wear and rubbing. There is a general contract specification as well as a heavy duty specification.



General Contract

PASSES

ASTM 3597 modified (#10 cotton duck);
15,000 double rubs Wyzenbeek Method



Heavy Duty

ASTM 3597 modified (#10 cotton duck);
30,000 double rubs Wyzenbeek Method or
ASTM D4966 (with 21oz. weight);
40,000 rubs Martindale Method

CLEANING CODE DEFINITIONS

S: Only pure, water-free solvents may be used.

CAUTION: Use of water-based or detergent-based solvents may cause shrinking and/or permanent water stains.

SW: Clean with water-based cleaning agents, foam or pure water-free solvents (Energine, Carbona, Renuzit or other similar products). vacuuming or light brushing is recommended to prevent dust and soil buildup.

W: Water-based cleaning agents or foam may be used.

Fabrics dyed on different dates may have slight variations in color
All specifications are subject to change without notice.

9to5
seating

9 to 5 Seating
3211 Jack Northrop Ave.
Hawthorne, CA 90250
Tel: 888.925.SEAT
Fax: 866.925.SEAT
www.9to5seating.com

Memo samples available.
Please contact the factory
for larger swatches.

888-925-SEAT
9to5seating.com