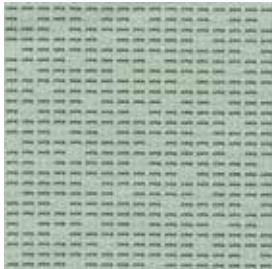
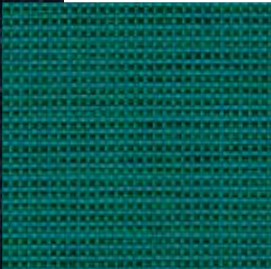
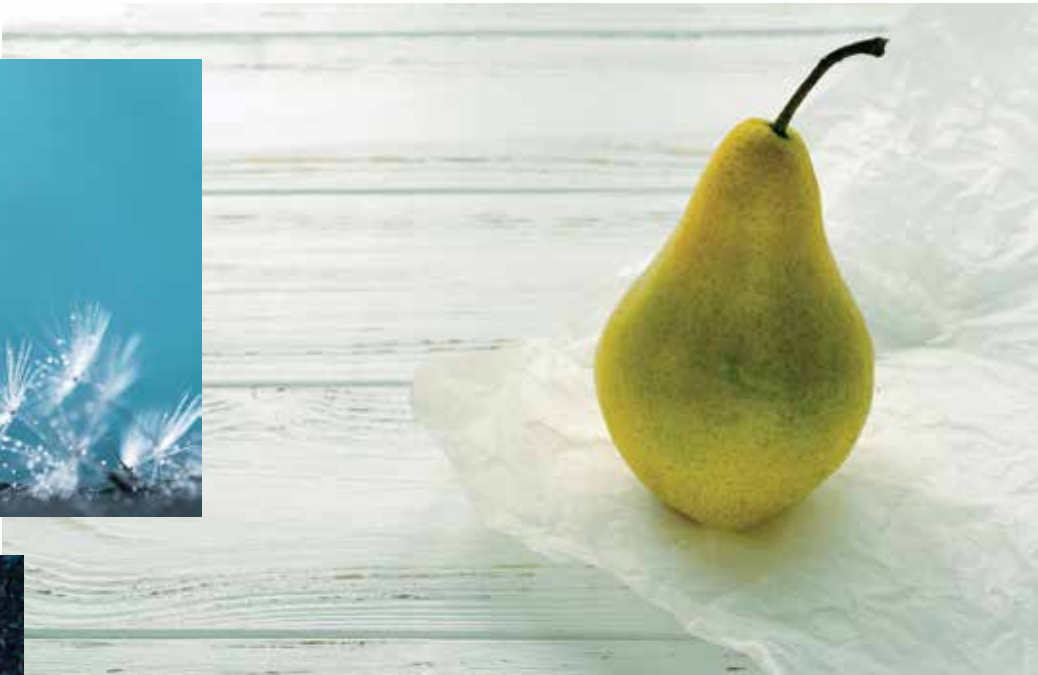


breeze

COLLECTION



*Calypso
Pear
Concrete*

Blue Note



BREEZE
COLLECTION

BYTE

HARBOR

QUATRO

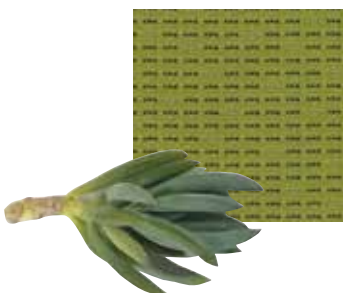
COASTAL

PALISADES

WALLACE

HUDSON

DECO








9to5 Seating's ExpressShip Fabric Program

Need it fast? We have you covered with a wide variety of upholstery options! Our ExpressShip program offers expedited shipment on our seating products, now including the Breeze Collection. Other ExpressShip fabric options include the 9to5 Signature Card 3.0 and Vivid cards. Memo samples are available. Please contact the factory for larger swatches.

info


Pattern	Content	Abrasion Resistance (Double Rubs)	Finish	Cleaning Code	Grade
Byte**	94% Post-Consumer Recycled Polyester 6% Pre-Consumer Recycled Polyester	100,000	None	WS BC (10:1)	B
Coastal	84% Polyester, 16% Rayon	100,000	Stain Repellent	WS	B
Deco	100% Polyester	100,000	Stain Repellent	WS	B
Harbor	100% Polyester	120,000	Water Repellent	WS	A
Hudson	100% Polyester	75,000	Water Repellent	WS	A
Quatro	53% Polyester 47% Pre-Consumer Recycled Polyester	100,000	None	WS	B
Palisades	50% Acrylic, 50% Polyester	100,000	Stain Repellent	WS	C
Wallace	100% Polyester	55,000	i-clean™	W	B





These patterns meet or exceed these ACT Performance standards for upholstery.


**Healthier Hospitals compliant


Icon Upholstery Definitions

- 

Fire Retardancy
Flammable testing determines as fabric's resistance to burning.
Passes Cal 117.
- 

Colorfastness To Wet & Dry Crocking
The rubbing off of color from the fabric onto clothing, hands or other materials and can occur under wet or dry conditions.
Passes AATCC 8-1974 Dry Crocking. Class 4 minimum, Wet Crocking. Class 3 minimum.
- 

Colorfastness to Light
The degree to which fabric will retain its color when exposed to light. *Passes AATCC 16A-1974 or AATCC 16E-1976. Class 4 minimum at 40 Hours. Note: Class 4 minimum at 60 hours is recommended for direct sunlight exposure.*
- 

Physical Properties
Brush Pill Test determines a fabric's pilling. Breaking/Tensile Strength Test determines the ability of a fabric to withstand tension without breaking or tearing. Seam Slippage Test determines the pulling apart of fabrics at the seams.
Passes Brush Pill ASTM D3511, 3-4 minimum. Breaking Strength ASTM D3597-D1682-64 (1975) 50 lbs. minimum in warp & weft, Seam Slippage ASTM D3597-D434-75 25 lbs. minimum in warp & weft.
- 


Abrasion
The ability of a fabric to withstand damage from wear and rubbing.
Passes Heavy Duty Contract ASTM 3597 modified (No. 10 cotton duck); 30,000 double rubs Wyzenbeek Method or ASTM D4966 modified (with 21 oz. weight); 40,000 rubs Martindale Method.

Cleaning Codes

- W:** Water-based cleaning agents or foam may be used.
- WS:** Water-based cleaning agents or foam may be used.
CAUTION: Use of water-based or detergent-based solvents may cause spotting, shrinking and/or permanent water stains. Solvent cleaning agents will remove water stains.
- BC:** Bleach Cleanable. Bleach cleanability is desirable for any fabric that may need to be disinfected or sterilized. Use a 10:1 water to bleach solution and rinse with water after cleaning.

Finish Definitions

- i-clean™** is a high performance stain, and moisture repellent, based on Nano technology.
- Stain Repellent** is designed to withstand most discoloration caused by contact with liquids.
- Water Repellent** repels most water and oil but is not thoroughly waterproof.



PHONE 888.925.SEAT

FAX 866.925.SEAT

EMAIL sales@9to5seating.com

3211 Jack Northrop Ave.
Hawthorne, CA 90250

9to5seating.com
Follow us @9to5seating





©2019 9to5 Seating • Breeze Card v1.0



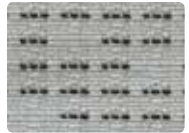
Byte Scarlet



Ocean



Cactus



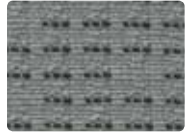
Concrete



Bluebird



Hunter



Pewter



Indigo



Wizard



Carbon



Harbor Lime



Barley



Santorini



Anchor



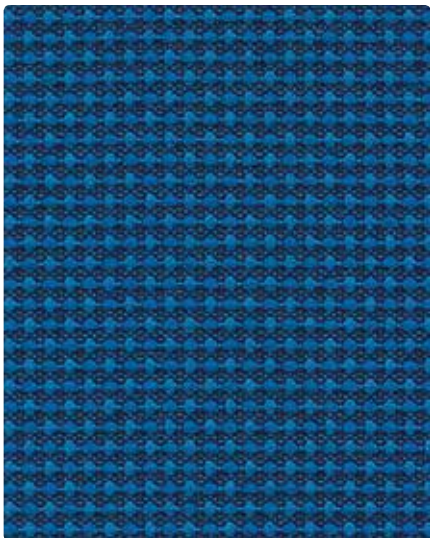
Flame



Admiral



Abyss



Quatro Varsity



Persimmon



Sundance



Platinum



Salsa



Kiwi



Smoke



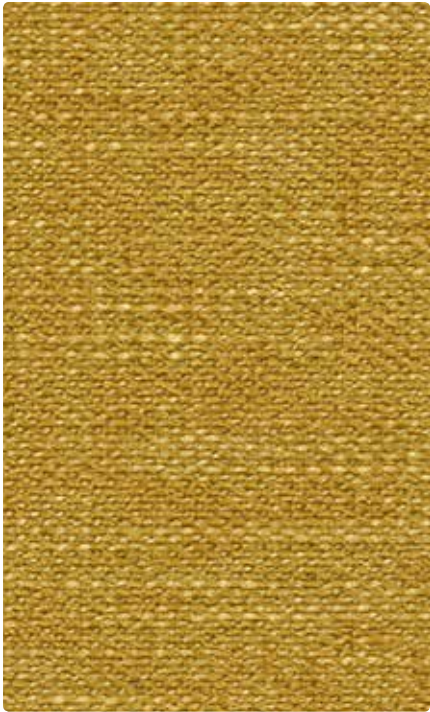
Mulberry



Turf



Panther



Coastal Firefly



Pearl



Crush



Seagrass



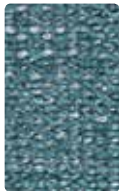
Gibraltar



Macadamia



Siren



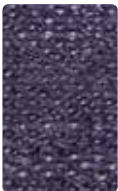
Seaside



Sharkskin



Cliffside



Amethyst



Meridian



Nightfall



Palisades Blue Note



Parchment



Romance



Avocado



Feather



Sand



Bonfire



Grove



Granite



Harmony



Dijon



Placid



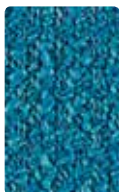
Black
Pepper



Castle



Harvest



Fountain



Blue Note



Wallace Rusty



Hint



Pear



Greyhound



Highland



Blue Jean



Oxford



Sable



Black Tie



Carbide



Hudson Gravel



Khaki



Sky



Lead



Valentine



Academy



Caviar



Deco Calypso



Vermillion



Artichoke



Linen



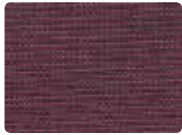
Majesty



Calypso



Slate



Raspberry



Pacific



Shadow