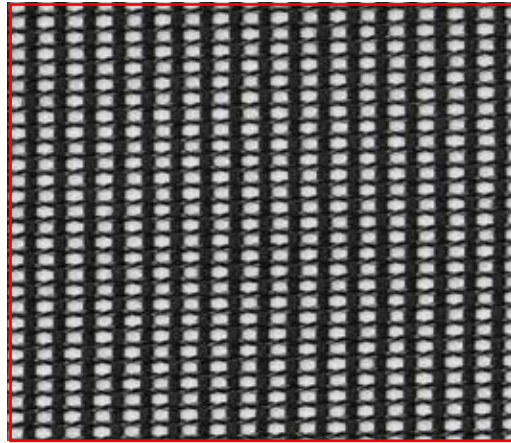
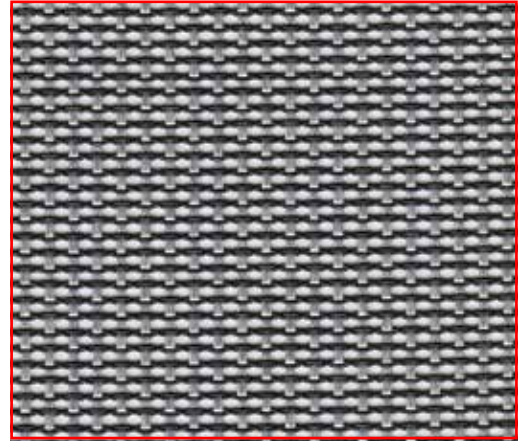


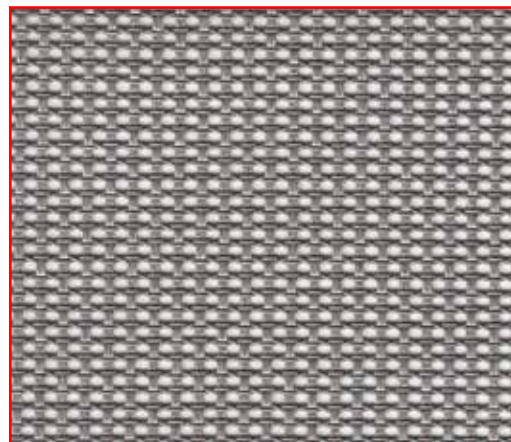
M1 Mesh



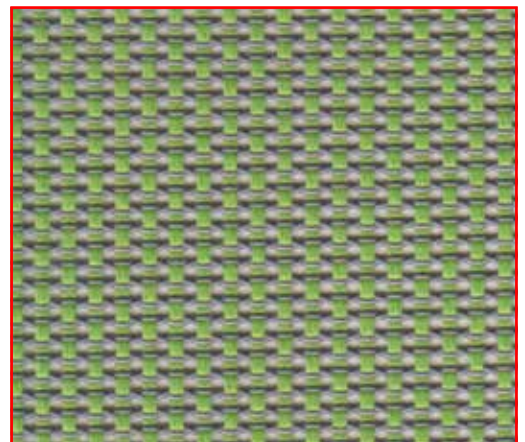
Black M11



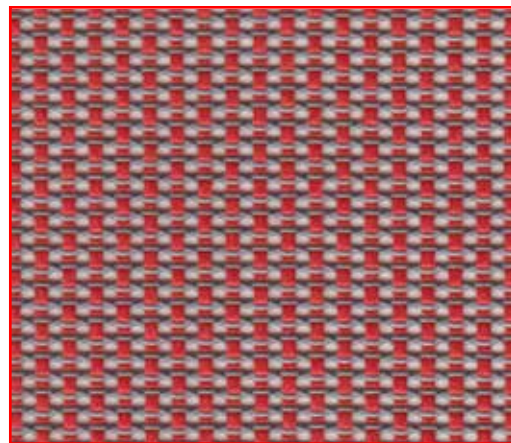
Gray M12



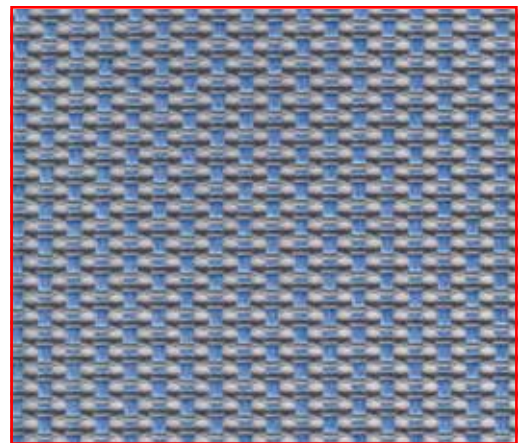
Silver M13



Green M14



Red M15



Blue M16

Pattern: M1 Mesh

68% Elastomeric,
32% Polyester

Abrasion: 100,000
Double Rubs

Soil and Stain
Resistant



EXPRESSSHIP
FABRICS

9to5 Seating's Express Ship Mesh Program

Need it fast? We have you covered with a wide variety of mesh options! Our Express Ship Program offers expedited delivery on our seating products including M2, M3 and M4 mesh options. This is in combination with fabric selected from our 9to5 Seating Signature Express Ship Card.

info

Pattern	M1 Mesh
Fiber Content	68% Elastomeric, 32% Polyester
Abrasion	100,000 Wyzenbeek Double Rubs
Applicable ACT®	    
Lightfastness	4
Cleaning Code	WS: Water-based cleaning agents, foam or pure-water-free solvents

Icon Upholstery Definitions



Fire Retardancy

Flammable testing determined as fabric's resistance to burning.
PASSES - California 117



Colorfastness To Wet & Dry Crocking

Colorfastness to wet & dry crocking refers to the rubbing off of color from the fabric unto clothing, hands or other materials and can occur under wet or dry conditions.
PASSES - AATCC 8-1974 Dry Crocking, Class 4 minimum; Wet Crocking, Class 3 minimum.

Abrasion

Abrasion is the ability of fabric to withstand damage from wear and rub. This is a general contract specification as well as a heavy duty specification.
PASSES -



General Contact: ASTM 3579 modified (#10 cotton duck); 15,000 double rubs Wyzenbeek Method



Heavy Duty: ASTM 3579 modified (#10 cotton duck); 30,000 double rubs Wyzenbeek Method or ASTM D4966 (with 21oz. weight); 40,000 rubs Martindale Method



Colorfastness to Light

Colorfastness to light is the degree to which fabric will retain its color when exposed to light.
PASSES - AATCC 16A-1974 or AATC 16E-1976; Class 4 minimum at 40 Hours. NOTE: Class 4 minimum at 60 hours is recommended for direct sunlight exposure situations.



Physical Properties

3 Physical property tests include: brush pill test to determine a fabric's pilling. Breaking/tensile strength is the ability of a fabric to withstand tension without breaking or tearing. Seam slippage is the pulling apart of fabrics at the seam.
PASSES - Brush Pill ASTM D3511, 3-4 minimum. Breaking Strength ASTM D3597-D1682-64 (1975) 50lbs. minimum in warp & weft Seam Slippage ASTM D3597-D434-75 25lbs. minimum in warp & weft.

9to5[®]
seating

3211 Jack Northrop Ave.
Hawthorne, CA 90250

PHONE
888.925.SEAT

FAX
866.925.SEAT

EMAIL
sales@9to5seating.com

9to5seating.com
Follow us: @9to5seating

