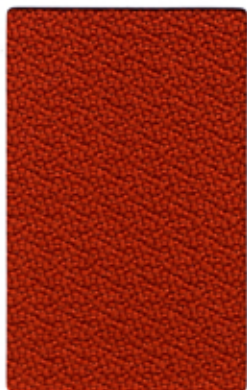


Grade B



Origin Mikan



System



Arundel



Eco



Sodalite



Sapphire



Basalt



Poppy



Garnet



Indigo



Iron



Malt

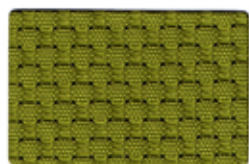


Jet

Grade B



Tate Helm



Digital



Bristol



Claret



Deep

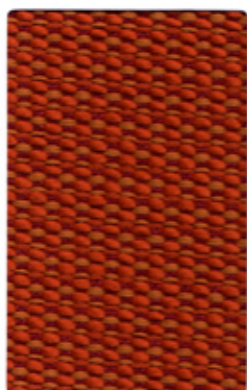


Burl



Demure

Grade C



Epic Slice



Pearl



Limestone



Kiwi



Jute



Capri



Steel



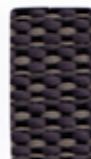
Azure



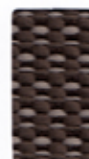
Flare



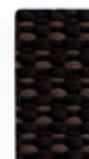
Regal



Granite



Porcini



Espresso

Grade C



Knack Filament



Teak



Zing



Brisk



Zest



Reed



Fresco

9to5 Seating's New Quick Ship Fabric Program

Need it Fast? We've got you covered with a wide variety of upholstery from Momentum in 2 Days!

- 9to5's 2 Day Quick Ship Program offers expedited delivery on our seating products, now with the many fabric options shown here from Momentum. This is in addition to our existing 9to5 Express Card.
- Product will be complete and ready to ship within 2 business days.
- Express Purchase Orders placed separately ship in 2 business days. If combined with other fabrics the lead time of the fabric with the longest lead time will be used.

Width - Pattern	Fiber Content & Backing	Finish	Abrasion (D.R.)	Light-fastness	Approx. Repeats	Cleaning Code	Grade
54" EPIC ▲ ▲ ▲ ▲ *	50% Polyester, 32% Post Industrial Recycled Polyester, 18% Post Consumer Recycled Polyester Acrylic Backing	Soil & Stain Resistant	100,000	40 Hrs. Class 5	¾" L, ½" W	WS	C
54" KNACK ▲ ▲ ▲ ▲ *	100% Polyester Acrylic Backing	Soil & Stain Resistant	100,000	40 Hrs. Class 5	1 ¾" L, 1 ¾" W	WS	C
58" ORIGIN ▲ ▲ ▲ ▲ *	100% Polyester Acrylic Backing	Soil & Stain Resistant	282,000	40 Hrs. Class 4	(none)	WS	B
66" TATE ▲ ▲ ▲ ▲ *	100% Polyester	n/a	51,000	40 Hrs. Class 5	(none)	WS	B

*ACT® Registered Certification Marks

EXPLANATION OF ACT ICONS FOR UPHOLSTERY

FIRE RETARDANCY

Flammability testing determined as fabric's resistance to burning.



PASSES
California 117

COLORFASTNESS TO WET & DRY CROCKING

Colorfastness to wet & dry crocking refers to the rubbing off of color from the fabric onto clothing, hands or other materials and can occur under wet or dry conditions.



PASSES
AATCC 8-1974 Dry Crocking, Class 4 minimum; Wet Crocking, Class 3 minimum

COLORFASTNESS TO LIGHT

Colorfastness to light is the degree to which fabric will retain its color when exposed to light.



PASSES
AATCC 16A-1974 or AATCC 16E-1976; Class 4 minimum at 40 hours
NOTE: Class 4 minimum at 60 hours is recommended for direct sunlight exposure situations

PHYSICAL PROPERTIES

3 physical property tests include: brush pill test to determine a fabric's pilling. Breaking/tensile strength is the ability of a fabric to withstand tension without breaking or tearing. Seam slippage is the pulling apart of fabrics at the seams.



PASSES
Brush Pill ASTM D3511, 3-4 minimum
Breaking Strength ASTM D3597-D1682-64 (1975) 50 lbs. minimum in warp & weft
Seam Slippage ASTM D3597-D434-75 25 lbs. minimum in warp & weft

For memo samples please contact.

MOMENTUM
TEXTILES

Toll Free 800-366-6839
memosamples.com



GREENGUARD Children & Schools Indoor Air Quality Certified®. CA Section 01350 compliant.
Eligible for CHPS Low-Emitting Material Credits.

ABRASION

Abrasion is the ability of a fabric to withstand damage from wear and rubbing. There is a general contract specification as well as a heavy duty specification.



PASSES
General Contract ASTM 3597 modified (#10 cotton duck); 15,000 double rubs Wyzenbeek Method



Heavy Duty ASTM 3597 modified (#10 cotton duck); 30,000 double rubs Wyzenbeek Method or ASTM D4966 (with 21 oz. weight); 40,000 rubs Martindale Method

CLEANING CODE DEFINITIONS

WS: Clean with water-based cleaning agents, foam or pure, water-free solvents (Energine, Carbona, Renuzit or other similar products). Vacuuming or light brushing is recommended to prevent dust and soil buildup.

9to5

s e a t i n g

9 to 5 Seating
3211 Jack Northrop Ave.
Hawthorne, CA 90250
Tel: 888.925.SEAT --> 888.925.7328
Fax: 866.925.SEAT --> 866.925.7328