

5 BUSINESS DAY QUICK SHIP
GRADES B, C, D



persuasion

canyon

phoenix

éncore
BY THE SYMPHONY COLLECTION

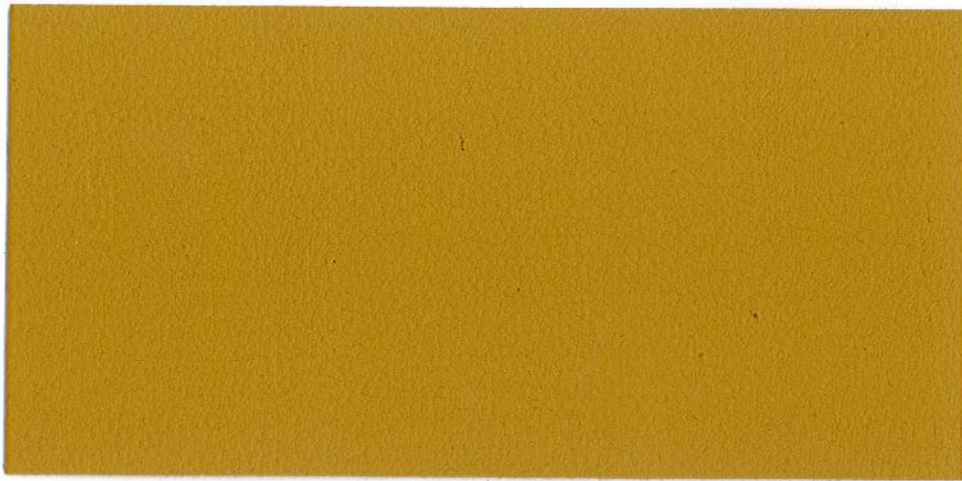
verve

9to5
seating

tango

PERSUASION

Grade B



Maize



Chiffon



Bisque



✕ Eggnog



Sand



Butterscotch



Curry



Citronella



✕ Aloe



✕ Avocado



Jalapeno



✕ Tahiti



Meridian



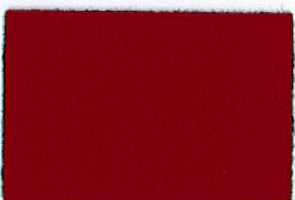
Blueberry



Iron



✕ Passion



China Red



Matador



Beet



Aubergine



Café



Pumpnickel



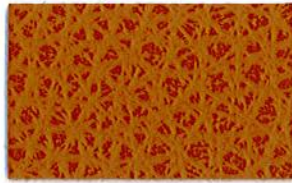
Onyx

CANYON

Grade C



Nugget



Pumpkin



Nutmeg



Mudslide



Red Rock



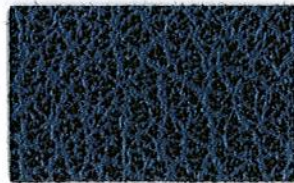
Cordovan



Fern



Greystone



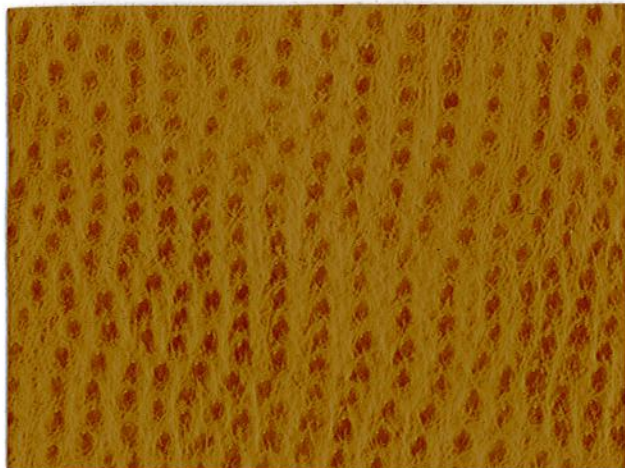
Carbon



Nightfall

PHOENIX

Grade C



Ochre



Snowflake



Fog



Biscotti



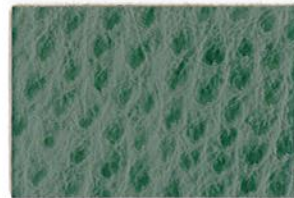
Chutney



Lemondate



Willow



Drizzle



Black Forest



Ruby



Outback



Chocolate Chip

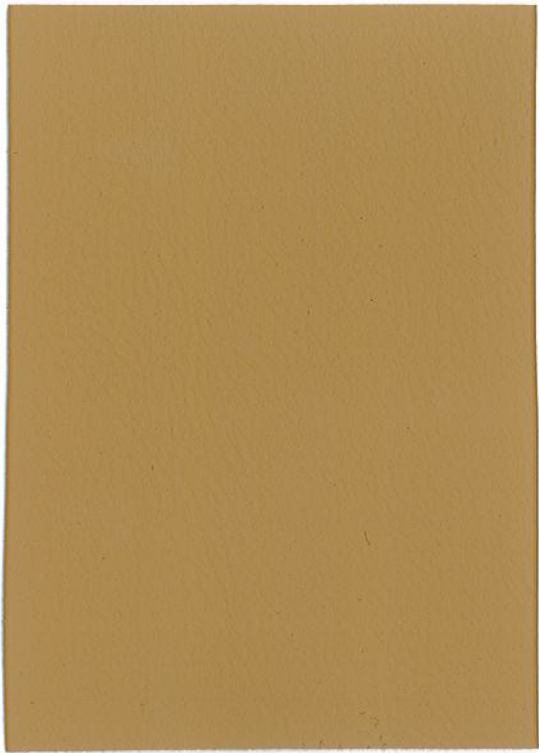


Caviar

VERVE

PVC Free

Grade D



Sisal



Avalanche



Limestone



Seagull



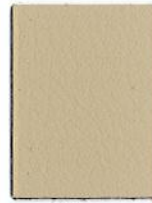
Gravel



Angora



Harvest



Ecru



Straw



Daffodil



Turmeric



Papaya



Mustang



Hibiscus



Cranberry



Baked Clay



Currant



Red Brick



Redwood



Verbena



Mink



Caramel



Toffee



Nutmeg



Allspice



Sable



Sumatra



Guacamole



Wasabi



Surf



Basil



Cove



Kirby



Evergreen



Slate



Mystic



Sapphire



Baltic



Newport



Storm



Raven

VERVE

APPLICATIONS Contract, Hospitality, Education, Healthcare, Cruise Ships

GENERAL SPECIFICATIONS

Width 54"
Roll Size 30 Yards
Surface Composition 100% Polyurethane
Backing Composition 100% Polyester

PERFORMANCE SPECIFICATIONS

Abrasion Resistance 500,000+ Double Rubs per
ASTM D 4157-07 Wyzenbeek / CFFA-1A
Hydrolysis 5 Years
Ultra Violet Resistance 200 Hours ASTM G26-96 Method C / CFFA-2
Cold Crack -20° F Federal Standard No. 191A-Method 5874 / CFFA-6
Croaking Class 4.5 Wet & Dry AATCC-Method 8-2001
Sulfide Stain Resistant

FLAMMABILITY REQUIREMENTS *

California Fire Code Technical Bulletin No. 117, Section E
 UFAC Class 1
 BIFMA
 NFPA 260
 IMO A.652 (16) 8.2 and 8.3
 May Comply with California 133 when Tested with Suitable Components

CLEANING INSTRUCTIONS

Prompt cleaning is always recommended. Ordinary dirt and stains can be removed with mild soap and water. Tougher stains can be removed with a 20% Bleach solution or a 50% Isopropyl Alcohol solution. Rinse the cleaned area with water and wipe dry with a lint-free cloth immediately after cleaning. If water or a cleaning agent is left to sit on this material for a period of time, it may leave a white residue, which can be wiped off with a damp cloth. The material should be wiped multiple times until the residue is removed. **Do not let water sit on the material for an extended period of time, as this may leave a watermark.**

REDUCED ENVIRONMENTAL IMPACT

Verve utilizes the latest technology for environmentally friendly coated fabrics. It is a Water Based Polyurethane that is free of solvents, antimonies, or other hazardous chemicals.
 PVC Free
 Solvent / DMF Free
 Formaldehyde Free
 Phthalate Free
 Heavy Metal Free
 Low VOC
 Energy Efficient Production
 Water Efficient Production
 Complies with California Proposition 65
 Complies with EN-71.

Stain Resistance per CFFA 141

Ketchup	Class 5
Mustard	Class 5
Mayonnaise	Class 5
Soy Sauce	Class 5
Butter	Class 5
Coffee	Class 5
Tea	Class 4.5
Cola	Class 5
Salad Dressing	Class 5
Blood	Class 4.5
Urine	Class 5
Iodine/ Betadine	Class 5
Motor Oil	Class 5
Liquid Foundation	Class 5
Hairspray	Class 5
Mascara	Class 5
Lipstick	Class 4.5

Grading: Class 5-Excellent
 Class 4-Good; Class 3-Fair;
 Class 2-Poor; Class 1-Very Poor

PERSUASION, CANYON, PHOENIX

APPLICATIONS Hospitality, Healthcare, Contract, Education, Marine, Automotive & RV, Residential

GENERAL SPECIFICATIONS

Width 54"
Roll Size 30 Yards
Weight 28 Ounces per Linear Yard
Backing 100% Brushed Polyester Knit

PERFORMANCE SPECIFICATIONS

Abrasion Resistance 100,000+ Double Rubs ASTM D 4157-92 Wyzenbeek / CFFA-1A
Mildew Resistance Pass ATM G21-96 / CFFA-120
Anti-Bacterial Pass AATCC 147 / CFFA-300
Anti-Microbial Pass ASTM G21-96 / CFFA-120
Ultra Violet Resistance 1000 Hours ASTM G26-96 Method C / CFFA-2
Cold Crack -10° F Federal Standard No. 191A-Method 5874 / CFFA-6
Stain Resistant with Resilience^{SR} Protection
Sulfide Stain Resistant

FLAMMABILITY REQUIREMENTS *

California Fire Code Technical Bulletin No. 117, Section E

UFAC Class 1

BIFMA

NFPA 260

MVSS 302

Boston Fire Department Code Test BFD IX-1

Port Authority of New York / New Jersey

IMO A.652 (16) 8.2 and 8.3

May Comply with California 133 when Tested with Suitable Components

Can be Treated to Pass FAA 25.853

CLEANING INSTRUCTIONS

Prompt cleaning is always recommended. Ordinary dirt and stains can be removed with a mild soap and water. Rinse the cleaned area with clean water and dry with a lint-free cloth. Persuasion, Canyon and Phoenix will resist, without serious discoloration, the repeated actions of normal dilutions of non-abrasive chlorine or ammonia-based cleaners.

ENVIRONMENTAL COMPLIANCE

Persuasion, Canyon and Phoenix are formulated to comply with California Proposition 65 as well as the European Standard EN-71.



Resilience^{SR} represents the latest technology in Faux Leather and Vinyl Protection, enhancing performance where it is needed the most:

STAIN RESISTANCE: With proper care, materials treated with Resilience^{SR} can be easily cleaned and will guard against stains maintaining the desired surface appearance for years to come.

ANTI-MICROBIAL & ANTI-BACTERIAL PROTECTION: Products treated with Resilience^{SR} are engineered to inhibit bacterial growth, as well as fungus, mold and mildew spores, resulting in a more hygienic environment.

ABRASION RESISTANCE: Resilience^{SR} provides additional wear properties and surface durability to any Vinyl or Faux Leather, thereby increasing the life of the material.

Resilience^{SR} is not visible, and does not affect the hand of the material. Resilience^{SR} is engineered to last, even after repeated cleaning and wear. Specify Resilience^{SR} for the most demanding healthcare and hospitality applications.