

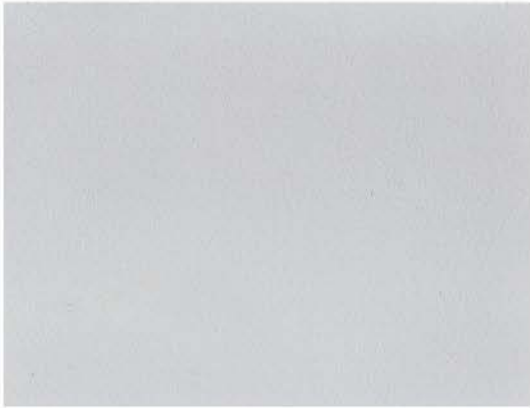


**Feeling is Believing
with Ultrafabrics[®]**

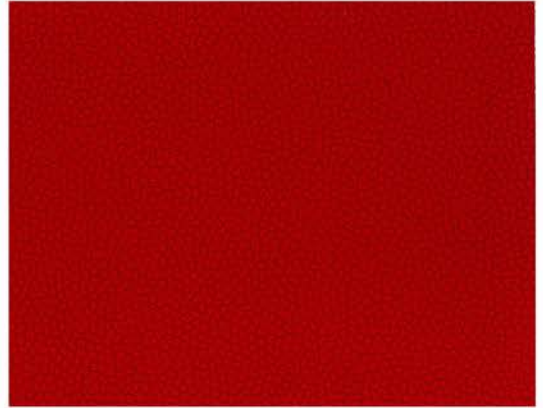
GRADE F
10 Day Ship



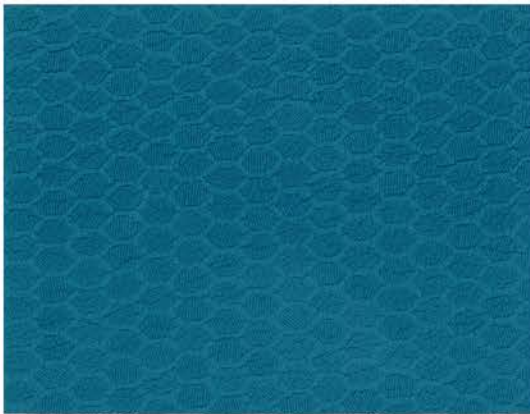
UP Cloud



CV Cherry Red



HX Paradise



PR Tusk



BRM Ocean Air



BRM Cambridge Blue





UP White Wash



HX Baby Powder



UP Parfait



BRO Cream



BRO Desert Clay



BRM Tiki Hut



BRO White



UP Shore



PR Cocoa



BRO Putty



BRM Wild West



BRO Bark



PR Mustard



UP Toasted Bagel



BRO Aztec



HX Flower Pot



PR Blood Orange



UP Rhubarb



BRO Salsa



PR Merlot



CV Lychee



UP Cranberry



BRM Katalox



BRO Cabernet



BRM Starry Night



PR Atlantic



BRO Evening Blue



UP Cougar



PR Sparrow



BRO Truffle



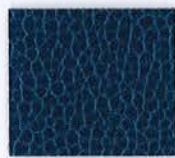
CV Capital Blue



UP Blueberry



BRO Skyway



PR Stone Blue



PR Aquamarine



BRO Sterling Blue



PR Malibu



UP Coastal



BRM Waterfall



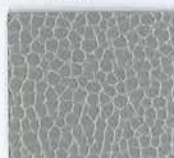
CV Emerald



BRO Apple Green



BRO Celery



PR Ash



HX Bridge



BRO Ash



UP Woodcres



HX Coconut Shell



BRO Shiitake



CV Soft White



BRM Sidewalk



CV Marlin



UP Char



PR Battleship



BRM Grey Jay



BRM Jurassic



CV Black Swan



HX Engine



PR Ebony



UP Dark Knight



BRO Black Onyx

SPECIFICATIONS

	Ultraleather® Pro (UP) Antimicrobial protection Ink and denim* resistant	Brisa® Mokume (BRM) Brisa® Original (BRO) Breathable technology	Ultraleather® Promessa® (PR) Antimicrobial protection	Ultratech™ Cove (CV) Ultratech™ Helix (HX)
COMPOSITION:	100% POLYURETHANE SURFACE 100% REINFORCED RAYON BACKING	100% POLYURETHANE SURFACE 65% POLYESTER, 35% RAYON BACKING	100% POLYURETHANE SURFACE 65% POLYESTER, 35% RAYON BACKING	100% POLYURETHANE SURFACE 65% POLYESTER, 35% RAYON BACKING
WEIGHT:	APPROX. 9.7 OZ. PER SQUARE YARD APPROX. 330 GRAMS PER SQUARE METRE	APPROX. 9.3 OZ. PER SQUARE YARD APPROX. 315 GRAMS PER SQUARE METRE	APPROX. 12 OZ. PER SQUARE YARD APPROX. 410 GRAMS PER SQUARE METRE	APPROX. 10.3 OZ. PER SQUARE YARD APPROX. 350 GRAMS PER SQUARE METRE
THICKNESS:	APPROX. 0.95 MM	APPROX. 1.0 MM	APPROX. 1.1 MM	APPROX. 1.0 MM
WIDTH:	54 INCHES / 137 CM	54 INCHES / 137 CM	54 INCHES / 137 CM	54 INCHES / 137 CM
CHARACTERISTICS				
ABRASION: (MEETS OR EXCEEDS)	ASTM D4157 / 500,000 DOUBLE RUBS** BS 2543 / 200,000 RUBS*** **WYZENBEK ***MARTINDALE	ASTM D4157 / 300,000 DOUBLE RUBS** BS 2543 / 160,000 RUBS*** **WYZENBEK ***MARTINDALE	ASTM D4157 / 400,000 DOUBLE RUBS** BS 2543 / 180,000 RUBS*** **WYZENBEK ***MARTINDALE	ASTM D4157 / 200,000 DOUBLE RUBS** BS 2543 / 200,000 RUBS** **WYZENBEK ***MARTINDALE
AIR PERMEABILITY:	NA	ASTM D737	NA	NA
ANTIMICROBIAL:	ASTM E2180	NA	ASTM E2180	NA
SOUND ABSORPTION:	NA	ASTM C423	NA	NA
HYDROLYSIS:	14+ WEEKS ASTM D3690-02 SECT. 6.11 (HYDROLYTIC STABILITY) ISO 1419 METHOD C (ACCELERATED AGEING)	14+ WEEKS ASTM D3690-02 SECT. 6.11 (HYDROLYTIC STABILITY) ISO 1419 METHOD C (ACCELERATED AGEING)	14+ WEEKS ASTM D3690-02 SECT. 6.11 (HYDROLYTIC STABILITY) ISO 1419 METHOD C (ACCELERATED AGEING)	14+ WEEKS ASTM D3690-02 SECT. 6.11 (HYDROLYTIC STABILITY) ISO 1419 METHOD C (ACCELERATED AGEING)
ADHESION OF COATING:	ASTM D751	ASTM D751	ASTM D751	ASTM D751
TEAR STRENGTH:	ASTM D2261	ASTM D2261	ASTM D2261	ASTM D2261
BREAKING STRENGTH:	ASTM D5034	ASTM D5034	ASTM D5034	ASTM D5034
COLORFASTNESS				
CROCKING:	AATCC 8, CLASS 5 WET & DRY	AATCC 8, CLASS 5 WET & DRY	AATCC 8, CLASS 5 WET & DRY	AATCC 8, CLASS 5 WET & DRY
LIGHT:	AATCC 16.3, 200 HOURS, GRADE 4-5 ISO 105 - B02 : 1999 GRADE 7/8	AATCC 16.3, 200 HOURS, GRADE 4-5 ISO 105 - B02 : 1999 GRADE 7/8	AATCC 16.3, 200 HOURS, GRADE 4-5 ISO 105 - B02 : 1999 GRADE 7/8	AATCC 16.3, 200 HOURS, GRADE 4-5 ISO 105 - B02 : 1999 GRADE 7/8
F/R RATING (HFR FREE)				
F/R RATING:	ASTM E84 (ADHERED) CA TB 117-201 FMVSS 302 & 95/28 ANNEX IV NFPA 260 UFAC	CLASS A PASS PASS CLASS 1 CLASS 1	ASTM E84 (ADHERED) CA TB 117-201 FMVSS 302 & 95/28 ANNEX IV NFPA 260 UFAC	CLASS A PASS PASS CLASS 1 CLASS 1

* CAN BE TREATED TO MEET FAR SPECIFICATIONS.

* THESE FABRICS, WHEN TREATED AND/OR USED WITH OTHER COMPATIBLE FURNITURE COMPONENTS, HAVE BEEN SHOWN TO PERFORM WELL UNDER THE FIRE TEST CONDITIONS OF CALIFORNIA TECHNICAL BULLETIN 133, ASTM E84 (UNADHERED), BS 5852 SOURCE 5 ("CRIB 5"), BS 7175, BS 5867 PART 2 TYPE B, IMO A.652(16) AND NFPA 701.

*REMOVAL OF MOST DENIM DYE MAY VARY DEPENDING ON THE QUALITY OF DYE AND THE PERIOD OF TIME THE STAIN SETS IN. DYE TRANSFER IS DIFFICULT TO CONTROL, NOT ALWAYS PREVENTABLE, AND MAY BE IRREVERSIBLE.

Cleaning & Care Instructions

- Clean with soap and water or alcohol based cleaners
- Sanitize using a 1:5 bleach/water solution
- Ultraleather® | Pro - for ink and tough stains, clean using isopropyl/rubbing alcohol
- Rinse all cleaning solutions with clean water

Earth Friendly

- **GREENGUARD Certified**
 - Meets stringent VOC emission standards
 - Promotes healthier indoor air quality
 - Contributes towards satisfying credits under LEED® and level®, BIFMA
- Compliant with Prop 65
- Less than 100 ppm of antimicrobial treatment⁺
- No Conflict Minerals
- No Flame Retardants (ex. Halogenated, Brominated)
- No PBDEs (Polybrominated Diphenyl Ethers)
- No Plasticizers, Heavy Metals, Stabilizers, Phthalates or Bisphenol A (BPA)
- No POPs (Persistent Organic Pollutants)
- No PVC (Polyvinyl Chloride)
- No toxic by-products
- Over 99% of solvents recaptured and recycled

⁺Denotes Pro and Promessa®

9 to 5 Seating

3211 Jack Northrop Avenue
Hawthorne, California 90250

Toll Free 888.925.SEAT | F 866.925.SEAT

www.9to5seating.com

9to5
seating
4/17

www.ultrafabricsllc.com

Ultrafabrics® and logo, Ultraleather®, Brisa®, Ultratech™ and Promessa® are trademarks of Ultrafabrics, LLC. Made in Japan.

Uf
Ultrafabrics®